

Nice Soon Pro

The compact guideless solution for light commercial sectional doors with light duty cycle requirements

For balanced sectional doors up to 16' high
24V DC electromechanical gear motor with absolute encoder



Features



All-in-one:

Control unit, motor, and electronics together in a small form factor



User friendly:

Optional battery backup ensures reliable door operation even when the power is out



Precise:

Absolute encoder guarantees positioning without mechanical limit switches, and allows for gradual start and slowdown during operation



Energy Saving:

Eco-mode saves power by placing the system in standby when not in use, integrated LED light reduces energy usage compared to incandescent bulbs used in traditional garage door motors



Safe:

Obstacle detection and entrapment systems are monitored during operation and safeguard against injury

Nice

Nice Soon Pro

Additional Features

Versatile:

Ideal for light commercial doors with light duty cycle requirements

Easy to install:

Compact design makes installation directly onto the shaft of a sectional door simple and fast

Practical:

Simplified connectivity between the control unit and optional accessories

Reliable:

Rigorous testing and quality control processes ensure long-term dependability

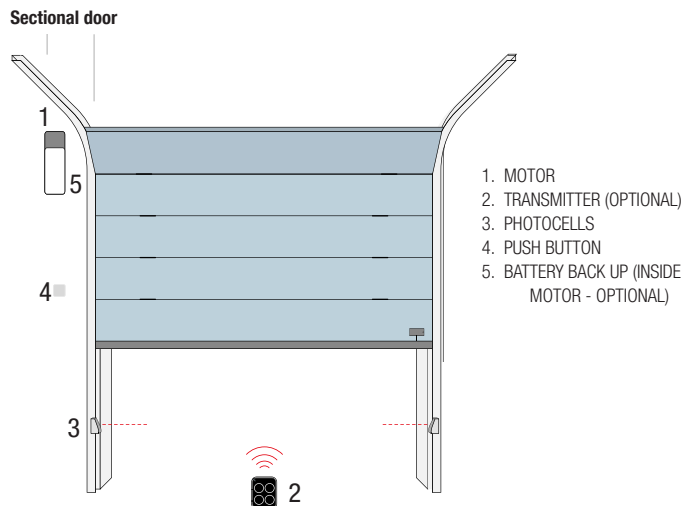
Easy maintenance:

Removable terminals and receivers

Space-saving Design:

All-in-one unit mounts next to the door

INSTALLATION DIAGRAM

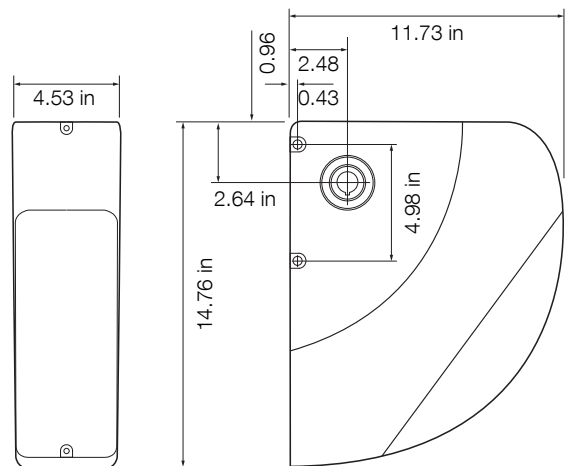


TECHNICAL SPECIFICATIONS

CODE	Description	Pack/Pallet
S02000	For balanced sectional doors up to 16' high 24V DC electromechanical gear motor with absolute encoder	24

CODE	S02000
ELECTRICAL DATA	
POWER SUPPLY (VAC 60 HZ)	115V
ABSORPTION (A)	1.6
POWER (W)	350
PERFORMANCE DATA	
SPEED (RPM)	30
TORQUE (NM)	50
DUTY CYCLE (CYCLES/HOUR)	15
MAXIMUM DOOR HEIGHT	16'
MAXIMUM DOOR WIDTH	18'
MAXIMUM DOOR WEIGHT	650 lbs.
MAXIMUM CYCLES PER DAY	25
DIMENSIONAL AND GENERAL DATA	
ENCLOSURE RATING	IP 40
BORE DIAMETER	1"

DIMENSIONS



Nice strongly recommends the use of pusher springs or bumpers on standard lift doors

ACCESSORIES INCLUDED



MK00649
Photo eyes



MV00003
Wall mounted
Open/Close/Stop
push button station



ON4E/A
Era One 4 channel
radio transmitter



PS124
24V battery with
integrated charger



OXI/A
Multi channel
receiver



EDSWG/A
3 Channel Wireless
Keypad



GAP13101
Adapter for 1" and
1.25" diameter shafts



877-888-1116 • niceforyou.com

Nice is a premier manufacturer of industrial, commercial, and residential door openers.

033122 N0003